

iScope

darkfield



supplementary
user manual

Assembly and use of a darkfield condenser for iScope

Installation and setting

1. Remove the brightfield condenser by unwinding the screw marked with the arrow. Set up the dark field condenser and tighten the screw



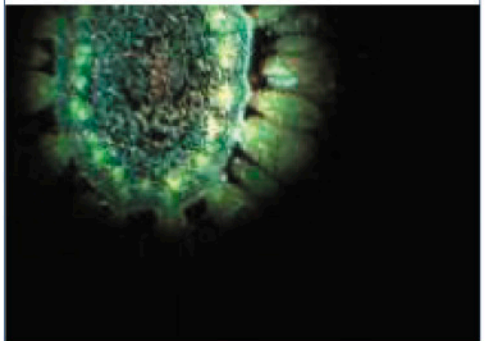
3. Lower the condenser slightly, place the slide. In this way, the immersion oil should not yet touch the object rinse
4. Gently turn the condenser up again. When the oil touches the slide, it is clearly visible through the slide



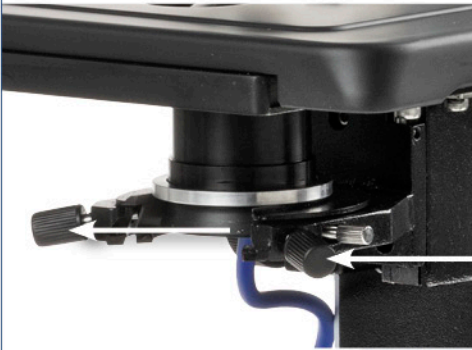
2. Turn the condenser to the highest position and place a drop of immersion oil on the lens



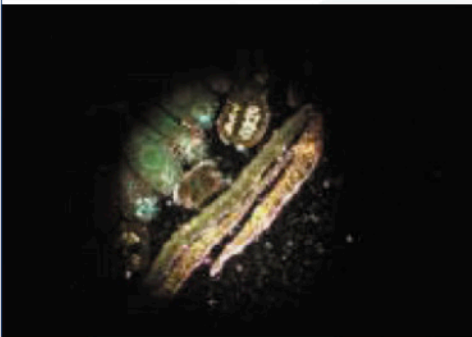
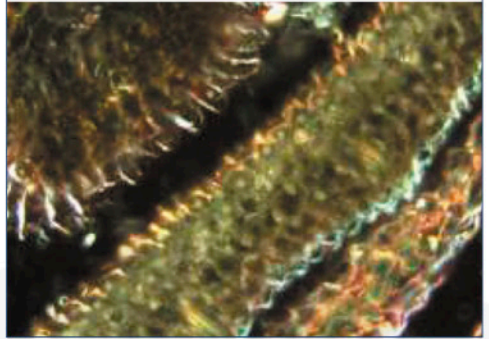
5. Focus the image with the least magnification (probably with 4x lens)



- 6.** Center the condenser with the screws of the condenser



- 7.** The condenser is now ready for use



- 8.** To use the 100x lens and/or the special 100x lens with built-in iris aperture, you must also put immersion oil on the prepared slide
- 9.** Focus the lens. On the lens 86.521 (A) and IS.7200-i (B) you can adjust the background by changing the opening of the inner lens aperture. The aperture can be changed by turning the ring





Euromex Microscopen bv • Papenkamp 20 • 6836 BD Arnhem • The Netherlands
T +31 (0) 26 323 22 11 • info@euromex.com • www.euromex.com

