

# LE.1975

polarizing LED ring light



# Contents

<b>1. General safety instructions</b>	<b>2</b>
1.1 Dangers associated with the operation	2
1.2 Photobiological safety LED, important safety instructions	2
1.5 Environment, storage and use	2
<b>2. Components</b>	<b>3</b>
<b>3. Installing the ring light</b>	<b>3</b>
<b>4. Using the ring light</b>	<b>4</b>
Adjusting polarized light	4
<b>5. Troubleshooting</b>	<b>4</b>

## 1. General safety instructions

### Intended use: a non-medical device

#### 1.1 Dangers associated with the operation

- Improper use could result in injury, malfunction or damage to property. It must be ensured that the operator informs every user of existing hazards
- Danger of electrocution. Disconnect the power to the entire lighting system before installing, adding or changing any component
- Not to be used in corrosive or explosive environments
- Avoid direct exposure of eyes to the collimated light beam or direct light from the light guides or fibres
- To avoid a hazard to children, account for all parts and keep all packing materials in a safe place

#### 1.2 Photobiological safety LED, important safety instructions

- Avoid direct eye exposure to any LED light source while switched on
- Before looking through the eyepieces of the microscope, lower the intensity of the LED illumination
- Avoid long and high-intensity exposure to LED light because this may cause acute damage to the retina of the eye

Before returning this item for repair or maintenance through a Euromex dealer, an RMA (return authorization form) together with a decontamination statement must be filled in! This document - available from Euromex for any reseller - must be shipped together with the item at all times

### Handle with care

- Avoid subjecting it to sudden shocks and impacts
- Impacts, even small ones, can affect the precision of the instrument

#### 1.5 Environment, storage and use

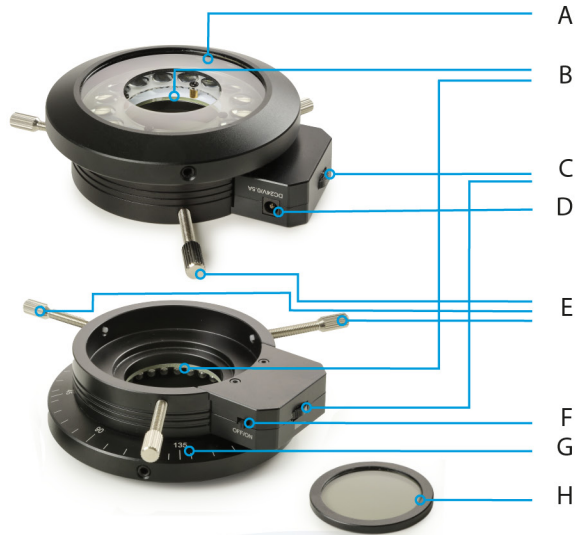
- This product is a precision instrument and it should be used in a proper environment for optimal use
- Do not place the product in direct sunlight
- The ambient temperature should be between 5 to +40°C and humidity should be within 80% and 50%
- Never turn the ring light on when the dust cover is in place

### Prevent contact with water and other fluids

Never allow water or other fluids to come in contact with your ring light, this can cause short circuiting your device, causing malfunction and damage to your system

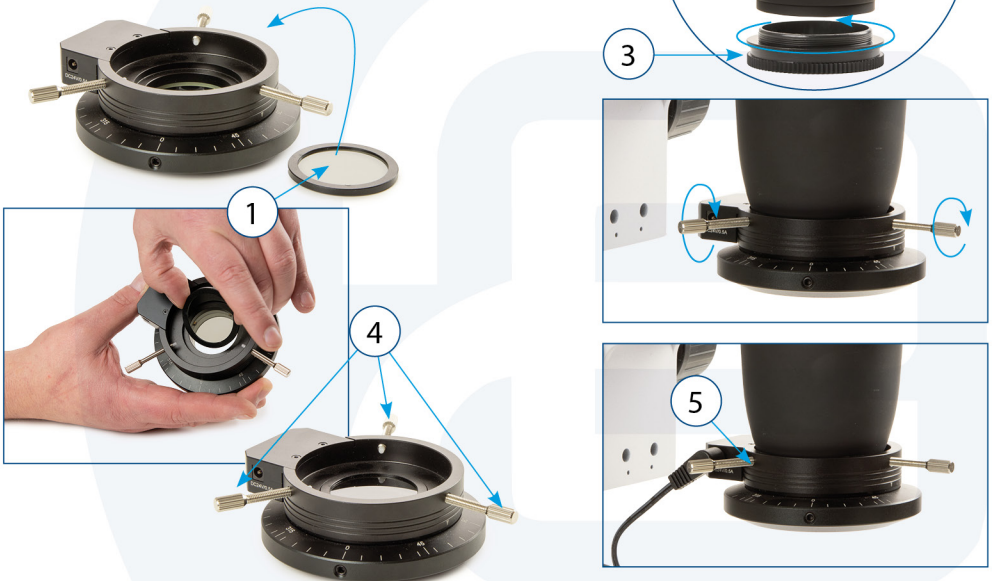
## 2. Components

- A. Emitting surface
- B. Emitting hole
- C. Light intensity control
- D. Power input
- E. Fixing knobs
- F. ON/OFF switch
- G. Polarizer
- H. Analyzer



## 3. Installing the ring light

- Put the analyzer (1) into the hole of the ring light
- Fit the optional adapter ring (3) underneath the objective (2)
- Open the fixing knobs (4) on the ring light and fit the illuminator to the adapter ring (3) or directly to the microscope head (2)
- Screw the fixing knobs. If you do not use the adapter ring, make sure the ring light is fixed properly and will not come off
- Plug the power supply in the power input (5) on the side of the ring light illuminator



## 4. Using the ring light

- Use ON/OFF switch (6) to turn the ring light on
- Use the light intensity control knob (7) to adjust the light intensity

### Adjusting polarized light

- While observing into the eyepieces, rotate the polarizer (8) to adjust the illumination
- The printed scale on the polarizer can be used for reference. It is not used for precise measurement in polarized light



## 5. Troubleshooting

Review the information in the table below to troubleshoot operating problems

PROBLEM	CAUSE	SOLUTION
	Optical System	
LED does not light up	Power cord is unplugged	Plug power cord into the power outlet
	Main switch is in "OFF" position	Put the main switch to "ON"
Light too dim on the sample	Intensity set too low	Adjust the intensity knob